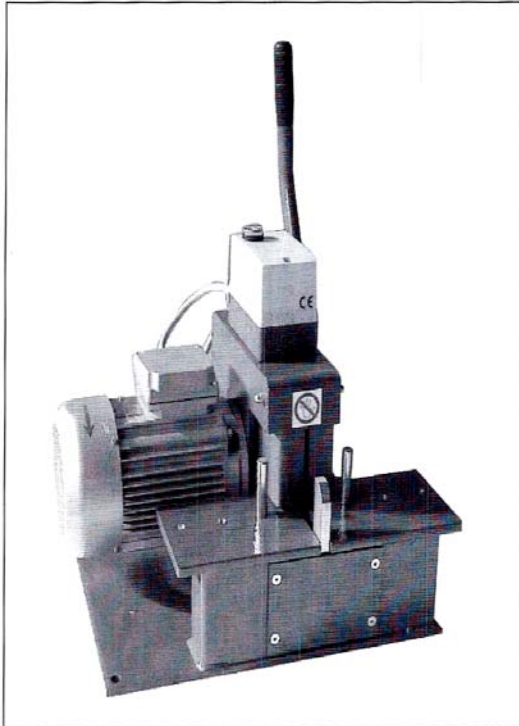


HSP K 250

slangenafkortmachine



Artikelnummer

HSP K 250

Specificaties

- ➔ slangen
 - 1 en 2 staalinlagen tot 2"
 - 4 staalinlagen tot 1 1/2"
- ➔ electromotor 220/380V - 50 Hz - 1,5Kw
- ➔ 2850 omw./min.
- ➔ mes - staal HSS - Ø 250 mm

BY 06-22

Leidingbuigmachine

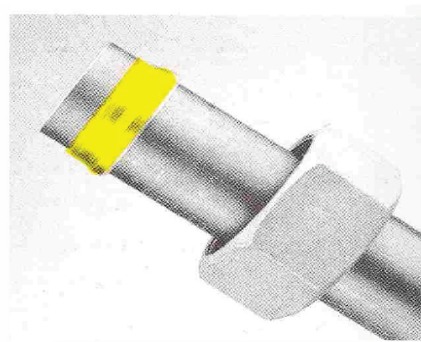
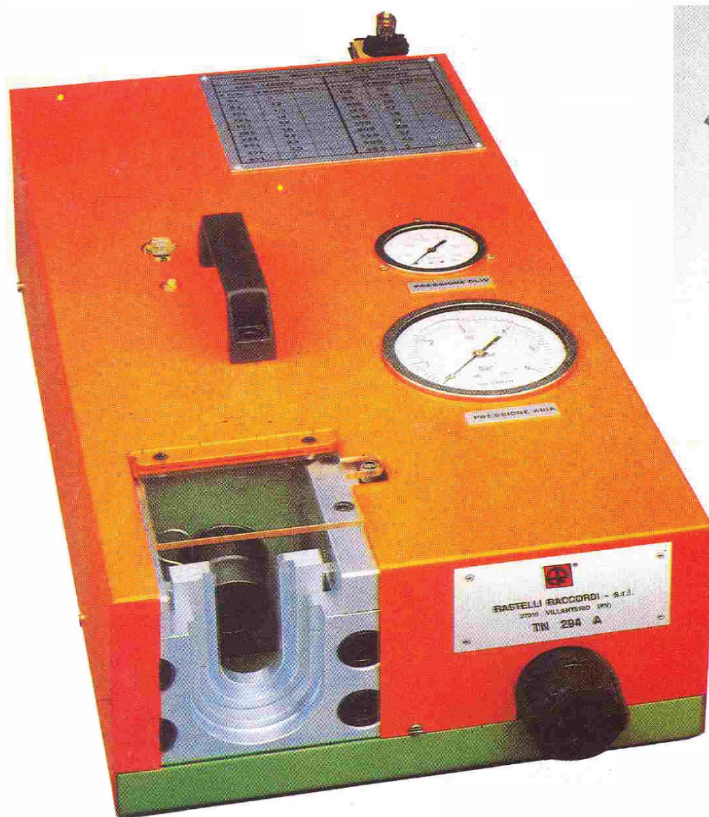
**Buigijzer voor het buigen van
Leiding van 6 tot 22mm**



Voormontage machine*Op aanvraag leverbaar*

I - 27019 VILLANTERIO (PV)

STN

TN 294A

Attrezzatura pneumatica portatile, pratica, per il premontaggio degli anelli dei raccordi DIN 2353 - ISO 8434-1

Zweckmäßige und tragbare Luftvorrichtung zur Vormontage von Verschraubungs-Schneidringen nach DIN 2353 - ISO 8434-1

Pneumatic pre-assembly machine to attach cutting rings for pipe union to DIN 2353 - ISO 8434-1

Appareil pneumatique, portable, pratique, pour le prémontage des bagues des raccords DIN 2353 - ISO 8434-1

Voormontage machine*Op aanvraag leverbaar***TN 285A**

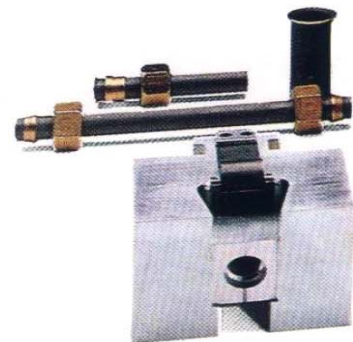
Attrezzature per il montaggio delle ogive dei raccordi
DIN 2353 - ISO 8434-1
Attrezzature per la svasatura a 37° dei tubi d'acciaio.

Vorrichtungen zur Vormontage von Schneidringen auf
Verschraubungen nach DIN 2353 - ISO 8434-1
Vorrichtungen zum Spitzsenken von Sthrohren auf 37°

Tools for the pre-fitting of the cutting ring for
DIN 2353 - ISO 8434-1
Tools for swaging steel tube at 37°

Appareils pour le prémontage des olives des raccords
DIN 2353 - ISO 8434-1
Appareils pour l'évasement à 37° des tubes en acier.

FUNZIONAMENTO IDRAULICO
HYDRAULIBETRIEB
HYDRAULIC WORKING
FONCTIONNEMENT HYDRAULIQUE

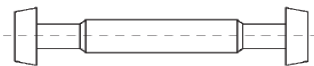


Voormontage machine Op aanvraag leverbaar

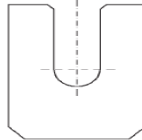
TN 285A

TABELLA ORIENTATIVA VALORI DI PRESSIONE ORIENTIERUNGSTAFEL ÜBER DRUCKWERTE			PRESSURE VALUE TABLE TABLEAU DES VALEURS DE PRESSION		
Serie Reihe Series Série	ØTubo e spessore Rohr Ø x Wandst Tube Ø x thickness Ø du tube x épaisseur mm.	Pressione di serraggio Spanndruck Tightening pressure Pression de serrage bars	Serie Reihe Series Série	ØTubo e spessore Rohr Ø x Wandst Tube Ø x thickness Ø du tube x épaisseur mm.	Pressione di serraggio Spanndruck Tightening pressure Pression de serrage bars
L	6 × 1	20	S	6 × 1,5	20
	8 × 1	30		8 × 1,5	30
	10 × 1	35		10 × 1,5	35
	12 × 1,5	35		12 × 2	35
	15 × 1,5	40		14 × 2	40
	18 × 1,5	60		16 × 2	55
	22 × 2	70		20 × 2,5	80
	28 × 2	80		25 × 2,5	105
	35 × 2	100		30 × 3	130
	42 × 3	160	38 × 5	160	

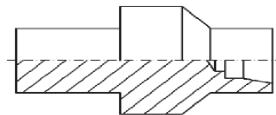
UTENSILI E CALIBRI - WERKZEUGE UND LEHREN - TOOLS AND GAUGES - OUTILS ET CALIBRES



TN 196



TN 286 A



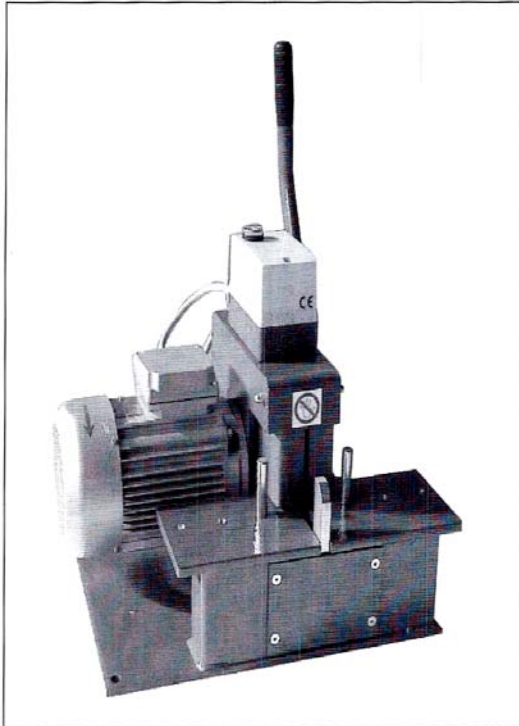
TN 287 A

Serie Reihe Series Série	Ø Tubo Rohr AD Tube O.D. Ø Tube d ₁	Simbolo di ordinazione - Bestell-Nr. - Part.No. - Références		
		Calibro conico - Kegellehre Tapered gauge - Calibre conique	Guida tubo - Rohrführung Tube guide - Guide tube	Forma conica - Kogelform Tapered form - Forme conique
L	6	TN 196 - 6 LS	TN 286 A - 6 L	TN 287 A - 6 L
	8	TN 196 - 8 LS	TN 286 A - 8 L	TN 287 A - 8 L
	10	TN 196 - 10 LS	TN 286 A - 10 L	TN 287 A - 10 L
	12	TN 196 - 12 LS	TN 286 A - 12 L	TN 287 A - 12 L
	15	TN 196 - 15 L	TN 286 A - 15 L	TN 287 A - 15 L
	18	TN 196 - 18 L	TN 286 A - 18 L	TN 287 A - 18 L
	22	TN 196 - 22 L	TN 286 A - 22 L	TN 287 A - 22 L
	28	TN 196 - 28 L	TN 286 A - 28 L	TN 287 A - 28 L
S	35	TN 196 - 35 L	TN 286 A - 35 L	TN 287 A - 35 L
	42	TN 196 - 42 L	TN 286 A - 42 L	TN 287 A - 42 L
	6	TN 196 - 6 LS	TN 286 A - 6 S	TN 287 A - 6 S
	8	TN 196 - 8 LS	TN 286 A - 8 S	TN 287 A - 8 S
	10	TN 196 - 10 LS	TN 286 A - 10 S	TN 287 A - 10 S
	12	TN 196 - 12 LS	TN 286 A - 12 S	TN 287 A - 12 S
	14	TN 196 - 14 S	TN 286 A - 14 S	TN 287 A - 14 S
	16	TN 196 - 16 S	TN 286 A - 16 S	TN 287 A - 16 S
	20	TN 196 - 20 S	TN 286 A - 20 S	TN 287 A - 20 S
	25	TN 196 - 25 S	TN 286 A - 25 S	TN 287 A - 25 S
30	TN 196 - 30 S	TN 286 A - 30 S	TN 287 A - 30 S	
38	TN 196 - 38 S	TN 286 A - 38 S	TN 287 A - 38 S	

165

HSP K 250

slangenafkortmachine



Artikelnummer

HSP K 250

Specificaties

- ➔ slangen
 - 1 en 2 staalinlagen tot 2"
 - 4 staalinlagen tot 1 1/2"
- ➔ electromotor 220/380V - 50 Hz - 1,5Kw
- ➔ 2850 omw./min.
- ➔ mes - staal HSS - Ø 250 mm

BY 06-22

Leidingbuigmachine

**Buigijzer voor het buigen van
Leiding van 6 tot 22mm**



HSP M

slangenschilmachine



Specificaties

- ➔ slangen t.e.m. Ø 1 1/4"
- ➔ elctromotor 220/380V - 50 Hz - 0,25 kW
- ➔ afmetingen 350 x 280 x 220
- ➔ gewicht 13,3 kg

Artikelnummer

HSP M 500 - 380

HSP M

schildoorn voor slangenschilmachine



Artikelnummer

slang

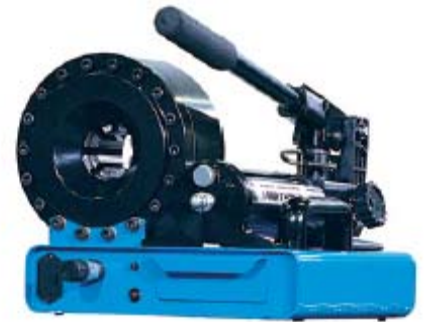
Artikelnummer		slang
		inch
HSP M 084 - 1	schillen buitenmantel	1/2
HSP M 104 - 1	schillen buitenmantel	5/8
HSP M 124	schillen binnenmantel	3/4
HSP M 124 - 1	schillen buitenmantel	3/4
HSP M 164	schillen binnenmantel	1
HSP M 164 - 1	schillen buitenmantel	1
HSP M 204	schillen binnenmantel	1 1/4
HSP M 204 - 1	schillen buitenmantel	1 1/4

Specificaties

- ➔ voor slangen met 1,2 en 4 staalinlagen

P16HP Finn Power pers

De P16HP handpers is een zeer geschikte machine voor montage van slangen ter plaatse. De pers is zeer handzaam en weegt niet meer dan 25kg. Slangen kunnen geperst worden tot 1" slang. De pers is zeer eenvoudig in de bediening. Als de persmaat bereikt is gaat het lampje branden. Ook kan er vrij eenvoudig een luchthydraulische bediening op aangesloten worden.



P16 HP

Standard Die Sets		
Code	Crimping diameter (mm)	L (mm)
16-10	10.0 - 12.0	55
16-12	12.0 - 14.0	55
16-14	14.0 - 16.0	55
16-16	16.0 - 19.0	55
16-19	19.0 - 23.0	55
16-23	23.0 - 27.0	55
16-27	27.0 - 31.0	65
16-31	31.0 - 38.0	65
MASTER DIES	39.0 - 45.0	

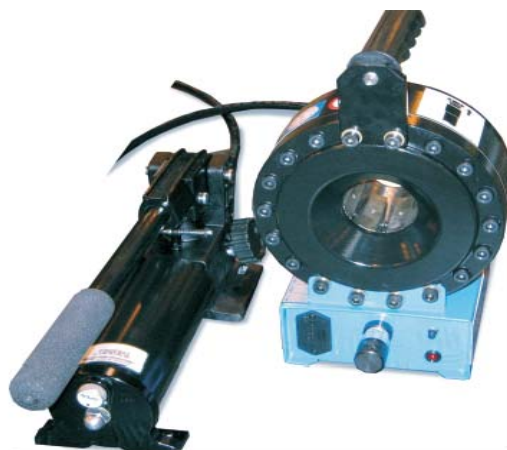
Crimping dia. 39.0 - 45.0 mm is crimped using master die.

Subject to change without notice.

Technical Specification	P16 HP	P16 AP
Hose size	1"	1"
Die type (1)	16	16
Max opening (mm) (2)	+20	+20
Master die shoe length (mm)	64	64
Operation (3)	manual	powerassist
Crimping force (kN)	955	955
Dimensions: length (mm)	331	337
width (mm)	386	402
height (mm)	271	271
Weight incl. oil (kg)	26	28

(1) see table for standard die set data
(2) min. crimping dia. of die set added by table value
(3) P16 AP operates with 7 bar 70"

P16HPZ



Standard Die Sets		
Code	Crimping diameter (mm)	L (mm)
16-10	10.0 - 12.0	55
16-12	12.0 - 14.0	55
16-14	14.0 - 16.0	55
16-16	16.0 - 19.0	55
16-19	19.0 - 23.0	55
16-23	23.0 - 27.0	55
16-27	27.0 - 31.0	65
16-31	31.0 - 38.0	65
MASTER DIES	39.0 - 45.0	

Crimping dia. 39.0 - 45.0 mm is crimped using master die.

Subject to change without notice.

Technical Specification	P16 HP
Hose size	1"
Die type (1)	16
Max opening (mm) (2)	+20
Master die shoe length (mm)	64
Operation (3)	manual
Crimping force (kN)	955
Dimensions: length (mm)	331
width (mm)	386
height (mm)	271
Weight incl. oil (kg)	26

(1) see table for standard die set data
(2) min. crimping dia. of die set added by table value
(3) P16 AP operates with 7 bar 70"

P20MS

20MS and 32MS crimping machines

Lillbacka Powerco has revolutionized the whole way of crimping by launching totally new, innovative crimping machine models. Finn-Power 20MS and 32MS crimping machines are pioneers with their sensational features.

LEARNING CONTROL

The main improvement is an **interactive MS control**, which can be taught the opening: set the desired opening and the machine will remember it and work semi-automatically.

ECONOMIC THINKING

New crimping machine models **save energy**: machine runs only when crimping is started and turns to the powersave mode after a set time.

ECO-FRIENDLY OPERATION

In addition to traditional machine oil, 20MS and 32MS machines can also be used with **rape seed oil**. New models also **run quietly**.



Lillbacka Powerco Ltd
P. O. Box 1, FI-62301 Härmä, Finland
Tel. +358 6 485 4444, Fax +358 6 485 4400
powerco@lillbacka.com
www.lillbacka.com/powerco



Technical features stay the same as in old models.

EXTREMELY DURABLE COVERS

The machine cover material is the same as in the car bumpers: it withstands little bumps and scratches and plastic is also rust-free.

ERGONOMIC CONSTRUCTION

Thanks to an entirely novel construction new models are easy to use both right and left handed and the feeding direction can be from front and back. Control device is embedded to the front cover allowing more working space for the operator. **The foot pedal and back stop device** are available as an option.

SERVICE FRIENDLINESS

20MS and 32MS allow easy access to the components. Due to that changing the oil and the filter is quick and easy. A special **Cylinder Protection Inserts** protect the cylinder from dirt and loose scrap.

P20MS

Finn-Power's P20 and P32 series of crimping machines are mid-range in terms of power, but compact from the point of view of space requirements.



P20

Finn-Power's successful P20 crimping machine ensures maximum operator ease and productivity, whatever the nature of the crimping task. Max. hose size is 1 1/2".



P32

Although the Finn-Power P32 weighs only 178 kg, its 2000 kN force produces high-quality crimping power for years and years of manufacturing. Maximum hose size is 2".

What makes Finn-Power P20 and P32 crimping machines unique?

- * Precision, durability, force and ease of use
- * Ergonomic design
- * Availability for three alternative controller styles
- * User-friendly Quick Change Tool system

Standard die sets*		
Code	Crimping diameter (mm)	L (mm)
20-10	10.0 - 12.0	55
20-12	12.0 - 14.0	55
20-14	14.0 - 16.0	55
20-16	16.0 - 19.0	55
20-19	19.0 - 23.0	55
20-23	23.0 - 27.0	55
20-27	27.0 - 31.0	70
20-31	31.0 - 36.0	70
20-36	36.0 - 41.0	75
20-41	41.0 - 47.0	75
20-47	47.0 - 54.0	85
20-54	54.0 - 61.0	85
32-10	10.0 - 12.0	55
32-12	12.0 - 14.0	55
32-14	14.0 - 16.0	55
32-16	16.0 - 19.0	55
32-19	19.0 - 22.0	55
32-22	22.0 - 26.0	70
32-26	26.0 - 30.0	70
32-30	30.0 - 34.0	70
32-34	34.0 - 39.0	75
32-39	39.0 - 45.0	75
32-45	45.0 - 51.0	90
32-51	51.0 - 57.0	90
32-57	57.0 - 63.0	100
32-63	63.0 - 69.0	110
32-69	69.0 - 75.0	110
32-74	74.0 - 80.0	110
32-78	78.0 - 87.0	110

Technical specifications	P20 MS / IS / VS		P32 MS / IS / VS	
Hose size	1 1/2"		2"	
Crimping range Ø (mm)	4...61		4...87	
Die type ⁽¹⁾	20		32	
Max opening (mm) ⁽²⁾	25		33	
Master die stroke length (mm)	80		80	
Motor (kW) ⁽³⁾	3		4	
Standard voltage (V) ⁽⁴⁾	230 or 400		230 or 400	
Crimping force (kN)	1370		2000	
Number of crimpings per hour ⁽⁵⁾	850		850	
Noise level (dB(A))	71		71	
Protection class	IP54		IP54	
Overall dimensions				
length (mm)	597		597	
width (mm)	475		536	
height (mm)	609		630	
Weight without oil (kg)	130		178	
⁽¹⁾ See table for standard die set data ⁽²⁾ This tabular value must be added to min. crimping dia. of die set ⁽³⁾ Single phase 1.5 kW ⁽⁴⁾ Single phase 230 V ⁽⁵⁾ Other voltages upon request ⁽⁶⁾ Theoretical with 1/2" hose ΔØ 10 mm ⁽⁷⁾ Single phase 250 crimpings (P20) and 200 crimpings (P32) per hour Options: - mechanical back gauge - foot pedal (IS / VS models) - quick change tool and QC Tool base or die set rack - special die sets * * In addition to the standard dies, a wide range of special die sets for different diameter, length and form is available.				

For Quick Change tool head, please contact us.

September 2019

P20MS

QC-Tool Bases for new machines

The new general production machines, Finn-Power 20MS and 32MS have now their own Quick Change Tool bases. As before, QC-Tool bases include a Quick Change Tool and plastic sleeves for the storage of the die sets.

NEW QUICK CHANGE TOOL BASES

The QC-Tool Bases for Finn-Power 20MS and 32MS are **not compatible with older machines.**

QC-Tool Base for 20MS
Purchase number 704169

QC-Tool Base for 32MS
Purchase number 703801



OLD QC-TOOL BASES

NOTE! The QC-Tool Bases for older machines cannot be used with new models.

QC-Tool Base for P20 with sleeves for 12 die sets.
The purchase number is 415827

QC-Tool Base for P32 with sleeves for 16 die sets.
The purchase number is 692633

QC-Tool Base for P51 with sleeves for 16 die sets.
The purchase number is 692409

Overzicht testers

Testers en flowblokken zowel digitaal als analoog zijn leverbaar.

